

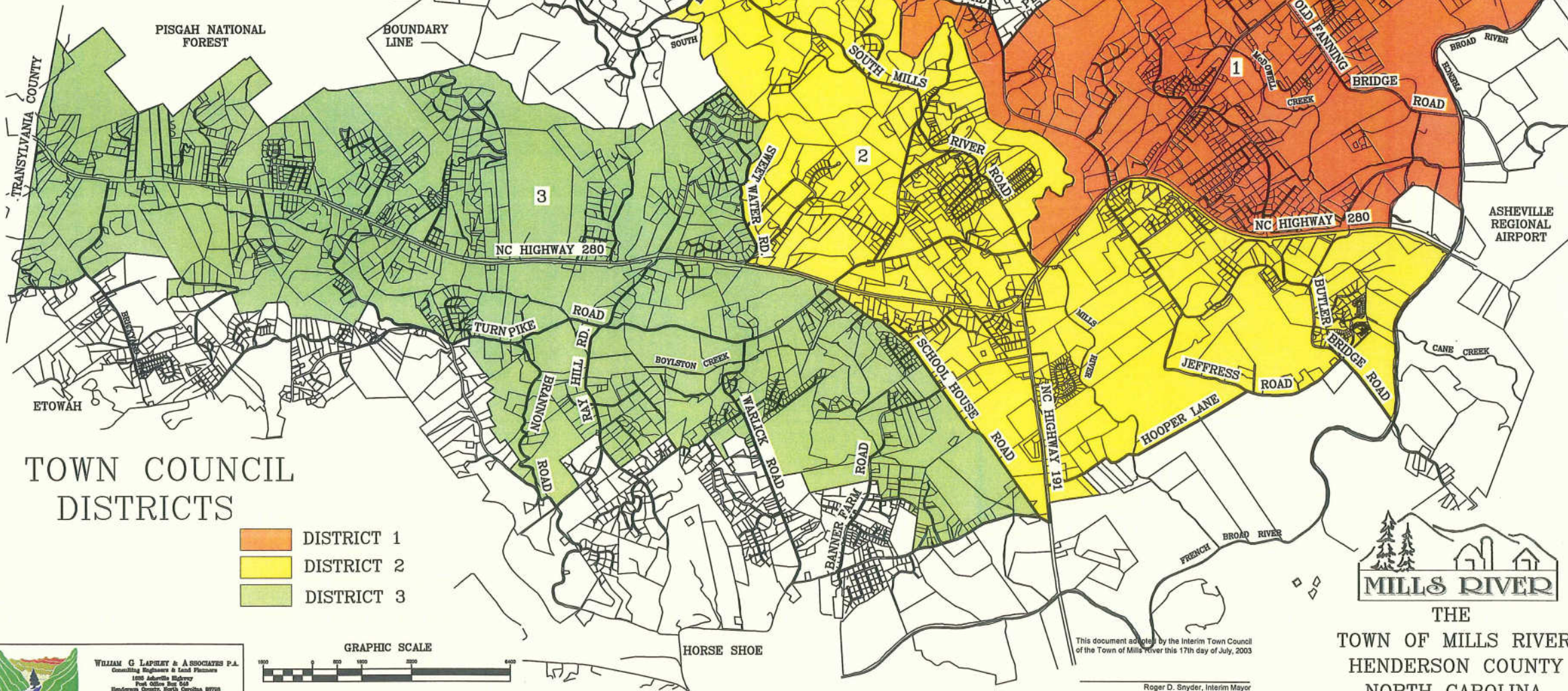
HENDERSON COUNTY MAP  
N.T.S.

**TOWN OF MILLS RIVER  
CORPORATE BOUNDARY DESCRIPTION**

Beginning at a point at the Buncombe-Henderson County line on Pennsylvania Road (SR 1348) and traveling South to the intersection with North Mills River Road (SR 1345). Turning Northwest on North Mills River Road (SR 1345) until the intersection with Whitaker Lane (SR 1341). Turning South on Whitaker Lane (SR 1341) until the intersection with South Mills River Road (SR 1338). Continuing South along Henderson County Land Records parcel lines known as 0802005 along the Southern edge; 9933871 along the Southern edge; 0800935 along the Northern and Eastern edges; 9900853 along the Eastern edge; 0801109 along the Eastern edge; 9965467 along the Southeastern edge; 9935627 along the Southeastern edge; 9935626 along the Southern edge; until reaching the Mills River Fire District line. Continuing West along the United States Forest Service property line and the Mills River Fire District line across what is commonly known as "Forge Mountain" to the Transylvania County Line. Following the Transylvania County line South to the Mills River Fire District line and then along with the Mills River Fire District line Southeast to Ladsen Road (SR 1314). Turning East on Ladsen Road (SR 1314) until reaching the intersection of Schoolhouse Road (SR 1426). Continuing East until the intersection with Haywood Road (NC Hwy 191). Turning North on Haywood Road (NC Hwy 191) until reaching Hooper Lane (SR 1353). Turning East on Hooper Lane (SR 1353), including the property on the Southeast side of the road listed with the Henderson County Land Records as: 0803205 along the Eastern edge; 9945652 along the Eastern and Northern edges; and rejoining Hooper Lane (SR 1353). Following Hooper Lane (SR 1353) until reaching Jeffress Road (SR 1345). Turning North along Jeffress Road (SR 1345) until its intersection with Butler Bridge Road (SR 1352). Following Butler Bridge Road (SR 1352) Northeast until reaching the Mills River Fire District line. Following the Mills River Fire District line North and Northwest back to the Buncombe-Henderson County line to Pennsylvania Road (SR 1348).

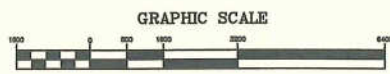
This document is a graphical representation of the boundary description for the Town of Mills River, which is stated in HB232/SSB 287 of the 2003 North Carolina General Assembly adopted on June 23, 2003. It is not a boundary survey as as described in the NCAC Title 21, Chapter 56.1603.

This document is a reproduction of the Henderson County Land Records information on file as of July 1, 2003. It is subject to revision at any time.

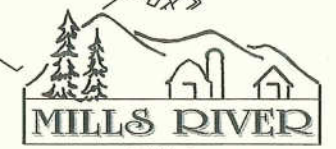


**TOWN COUNCIL  
DISTRICTS**

- DISTRICT 1
- DISTRICT 2
- DISTRICT 3



**WILLIAM C. LAPSELEY & ASSOCIATES P.A.**  
Consulting Engineers & Land Planners  
1000 Asheville Highway  
Post Office Box 640  
Henderson County, North Carolina 28739  
800-237-7154 Fax 800-237-7155



THE  
TOWN OF MILLS RIVER  
HENDERSON COUNTY  
NORTH CAROLINA

This document adopted by the Interim Town Council of the Town of Mills River this 17th day of July, 2003

Roger D. Snyder, Interim Mayor